

# CCF ANNUAL REPORT 2013

Cambodian Children's Fund  
Annual Report and Audited Financials

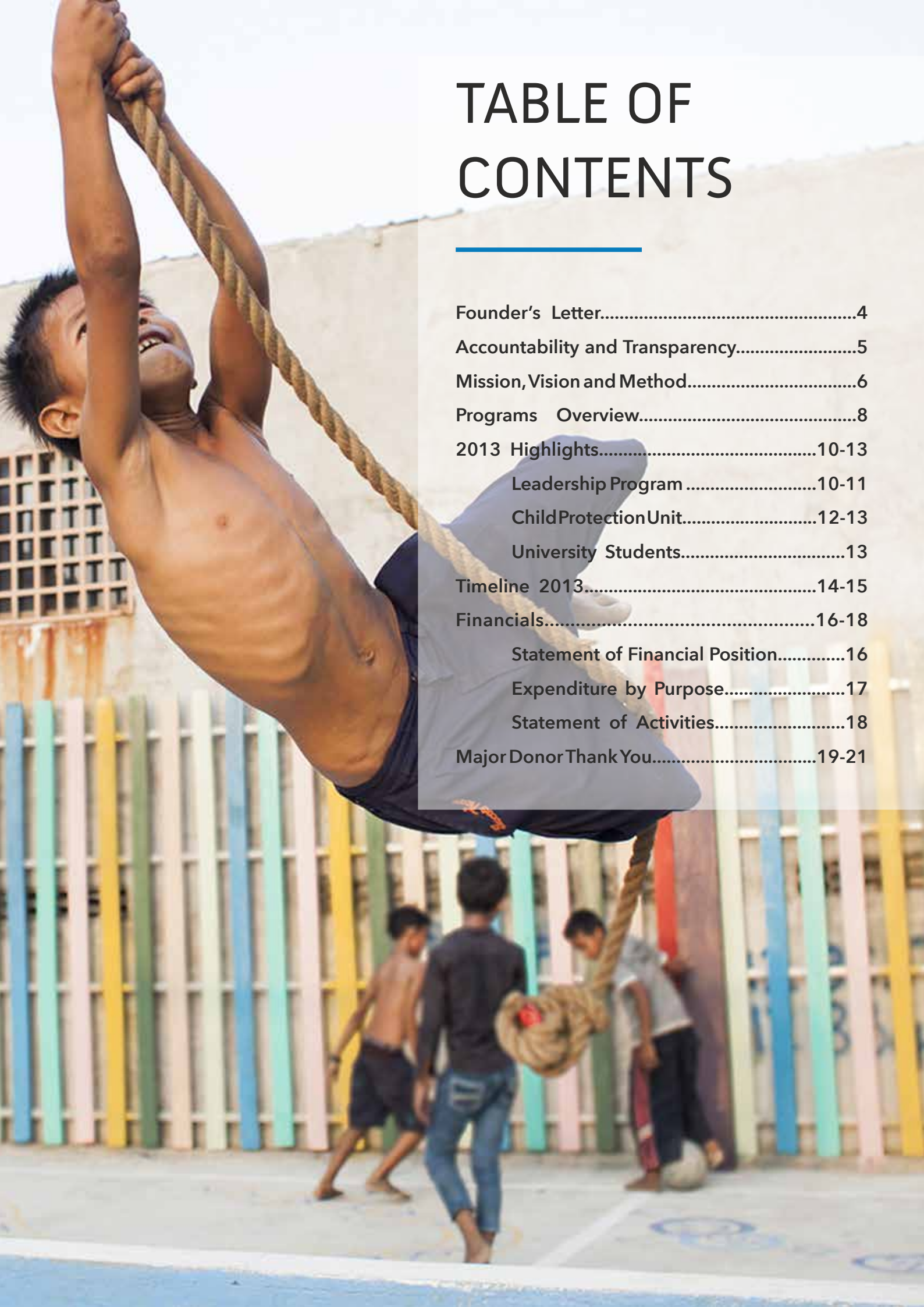
ស៊ីតាប្រសិទ្ធ

Cambodian Children's Fund  
transforms the country's most  
impoverished kids into  
tomorrow's leaders.

---







# TABLE OF CONTENTS

---

Founder's Letter.....	4
Accountability and Transparency.....	5
Mission, Vision and Method.....	6
Programs Overview.....	8
2013 Highlights.....	10-13
Leadership Program .....	10-11
Child Protection Unit.....	12-13
University Students.....	13
Timeline 2013.....	14-15
Financials.....	16-18
Statement of Financial Position.....	16
Expenditure by Purpose.....	17
Statement of Activities.....	18
Major Donor Thank You.....	19-21



## Founder's Letter

Ten years ago I left my job in Hollywood and moved to Cambodia to start the Cambodian Children's Fund.

After 26 years in the film business, it was no easy decision to leave a career and lifestyle that many consider "the American Dream". That decision has since been the focus of many media stories, from ABC's Australian Story "Streets with No Names", to People Magazine and Reader's Digest.

Such a drastic change came about after a chance trip to Phnom Penh's garbage dump, Steung Meanchey, then home and workplace to over 1,500 children, many abandoned or orphaned, living a hand-to-mouth existence, highly vulnerable and without access to education, and all within the most impoverished area in the region.

However this isn't a story about suffering but about what has been accomplished and the results of opportunity meeting potential.

Today CCF cares for over 2,000 children and has received awards, from The House of Commons to Qatar, for innovation and education. The measurable criteria - the reduction in school absentee rates from 45% in 2004 to 2.7% in 2013, or the maternal death rate of zero, over 4 years and 750 births - are remarkable in their own right. However nothing tells the story as profoundly

as the journey of an individual child. Children once trapped in a world of relentless work, abuse and hopelessness are now community leaders, thriving in higher education, with a strong sense of independence and taking the responsibility to help their own families and communities.

The past year has seen many charities and founders fall from grace - a disproportional number in Cambodia - and left many people disillusioned and skeptical. However Cambodian Children's Fund is the real deal.

Whether measured by the success of our programs, the use of donor funds, the transparency of operations, the ratings of independent evaluation services or reviews of those who have spent time here, CCF provides a reason to believe in effective, meaningful and selfless charity. Leaving Hollywood and the million dollar salary, the enviable life and assorted frills wasn't done on a whim but by a vision of "what could be": a charity based on fundamental values and measured to the highest levels of effectiveness. And that is where we are today.

Scott Neeson, Founder and CEO

# Accountability and Transparency

Cambodian Children’s Fund is supported through generous donations from individuals, corporations and foundations. CCF is independently audited every year to meet US accounting standards, ensuring all measures of performance are accurate and quantifiable.

CCF is a registered charitable organisation in the following countries:

## Cambodia

CCF’s main operations - including all programs - are located in Cambodia, mostly around the former landfill area of Steung Meanchey in Phnom Penh. CCF is registered with the Cambodian Government and MoSAVY (Ministry of Social Affairs, Veteran and Youth Rehabilitation).

## United States

Cambodian Children’s Fund is a U.S.-registered

501(c)3 not-for-profit organization, Federal Tax ID no. 20-0764162. All US donations are tax-deductible to the fullest extent of the law.

## Australia

Cambodian Children’s Fund Australia (CCFA) is a non-profit Australian charitable fundraising organisation. CCFA works in partnership with Global Development Group to support approved development programs delivered by Cambodian Children’s Fund (CCF) in Cambodia in accordance with AusAID criteria.

## Hong Kong

Cambodian Children’s Fund (Hong Kong) Limited is a registered charity under section 88 of the Inland Revenue Ordinance - File No: 91/11559

## United Kingdom

Cambodian Children’s Fund UK (CCF UK) is registered as a charity with the Charity Commission of England and Wales, No. 1135214. Donations are eligible for tax relief where appropriate.

# An organization you can trust.

For five consecutive years, CCF has received 4 out of 4 stars from industry watchdog Charity Navigator.

Four stars are given to organisations deemed exceptional who, “exceed industry standards and out-perform most charities in its cause.”



	Score (100)	Rating (Four Stars)
Financial	95.12	★★★★
Accountability & Transparency	96.00	★★★★
<b>Overall Rating</b>	<b>95.53</b>	<b>★★★★</b>



# CCF MISSION

Transforming Cambodia's most impoverished kids into tomorrow's leaders.



## VISION

We believe that by providing an impoverished child with a high-level education, they will be able to lift themselves and their family out of poverty.

We believe that a generation of educated children will have the power to change a whole society.

CCF helps students build the skills, confidence and integrity to become leaders of change in their community.

We understand that helping a child without helping a family is a very limited success. By supporting families and encouraging students to be active in family and community life, lasting generational change can be made.

## METHOD

Education has and always will be driving force of CCF's work, with the development of leadership key to the success of our programs. However, to get children to attend school - and to keep attending - we don't only offer an education. We address the issues

and dysfunction that kept the children out of school in the first place.

CCF operates more 65 projects providing extensive care for people of all ages through our five interconnected areas of service: education, leadership, healthcare, childcare, and community outreach. We work at the grassroots level to develop effective solutions to the complex issues of poverty.

This unique model of community development is unlike any other in the world. By working closely with the community, we ensure that the beneficiaries are involved in all our work and that they never lose their sense of responsibility or independence.

We started as a single shelter offering education and refuge for 45 at-risk children living and working in the now-closed Steung Meanchey garbage dump. Today, CCF provides education and support to nearly 2,000 students and helps 10,000 community members every month.

CCF has grown, but the quality of services continues to improve. The numbers speak for themselves. When CCF first opened in 2004, the absentee rate for school was 45 percent. At the time, education was a luxury for impoverished families who needed their child to earn an income. By addressing the root problems of poverty, the current absentee rate of less than 3 percent is lower than much of the developed world.

In 2004, only 45 percent of the children we cared for were enrolled in public school. The enrollment rate is now 98 percent, with more students beginning their education regularly. Students who missed years of school are caught up with a special curriculum combining two years of learning into one.

All these efforts are providing a pathway out of poverty. Remarkably, more and more young children who once toiled in the squalor of the now-closed Steung Meanchey garbage dump are approaching adulthood and entering university. This was unimaginable nearly a decade ago, as simply attending school was just a dream for so many.



# Programs Overview

CCF operates over 65 projects, which fit in to five main program areas.



## Education

CCF's education program serves more than 2,000 students and operates across 8 facilities. We provide impoverished children in the hardest-to-reach communities with a quality academic curriculum.

We also work with local schools to integrate our students into the public education system for additional learning. Many of our students had previously never attended school or had been forced to drop out at a young age. Now they're on track to graduate high school and enter university.



## Leadership

Leadership is one of the most important pillars of CCF. We strive to create leaders who are committed and passionate about their communities, so that we are creating long-term positive change.

Most of these students are only in their teenage years, but they're already running our evening food program, assisting the elderly in our granny program and serving as mentors to younger children. These leaders have what it takes to go out and contribute to creating a better Cambodia.



## Community Outreach

Thanks to a fast-acting team and a wide range of programs, families and children living in poverty receive the support they desperately need.

Our programs address problems such as homelessness, insurmountable debt, hunger, domestic abuse and much more. Our community center serves as the hub, offering food, fresh water and support from staff. When a family's basic needs are met, lasting change can be made to their quality of life.



## Healthcare

Medical costs can send struggling Cambodian families into ruin, making the CCF Medical Clinic a necessity for the community. It's Cambodia's only free medical clinic serving people of all ages, regardless of their ailments.

The clinic treats 2,500 patients monthly, and we work with local hospitals and international medical professionals to ensure that children and their families get the care they need.



## Childcare

When a family suffers from dire poverty, children are at risk of malnutrition, abuse and other problems. Our childcare programs ensure that young kids grow into healthy adults. Early intervention is critical, so each CCF child is given a complete physical and regular checkups. The daycare and nursery provide our littlest students with a safe, fun place to learn as their parents work. It's the first step towards a full education, and our day care students eventually begin formal schooling prepared for the challenges ahead.





# 2013 Highlights



## Leadership Program

Our leadership program goes well beyond theory. Every day at CCF, we see the tangible results of fostering confidence and initiative in our students.

The young leaders - most of whom come from unimaginable poverty and a difficult home life - have been given the skills to make a difference. Our programs teach responsibility and critical thinking, combined with valuable hands-on experience. These students are not defined by their pasts, but they are strengthened by empathy and understanding for those who need help.

It's these leaders - most in their teenage years - who administer our evening food program feeding 550 hungry kids on a nightly basis. They make house calls to the grannies in the community to provide food, care and conversation. These leaders are the role models for our younger students and pass on their knowledge as volunteer teachers.

Within CCF, the program has been an outright success that continues to grow in popularity. Our goal is to create a future generation of leaders who can benefit not just themselves and their families. We challenge them to think of what they can do to make a positive impact on society. Cambodia has some of the youngest demographics in the world. It's this segment of the population that will one day

shape the quickly growing nation.

Some of our students have already risen to the challenge on an international scale. Every year, 10 CCF students represent Cambodia at the Global Youth Leadership Summit in California hosted by the Anthony Robbins Foundation. After the intensive seminar ends, the leaders bring back what they learned for our local student-run Annual Youth Leadership Event that reaches hundreds of kids.

Another highlight of the year is the leadership camp held in the countryside. More than 800 students attend this event and everything is organized by the young leaders themselves.

The students at CCF have an inner strength. We help channel that strength into impassioned thinking. Thanks to these young leaders, the future is bright.





### Leadership starts early.

Leadership isn't simply a class subject at CCF - it's built into everything we do. The journey to become future leaders starts at a young age. Even children in our nursery and daycare program learn about their rights and responsibilities. It's never too early to teach children the importance of respect, compassion and care.



### Students give back to their community.

By the time CCF students reach their teenage years (and often even before then), they are actively contributing to CCF's programs. They teach younger students in our satellite schools, organise our evening food program, and regularly visit grannies in the community. The granny program is especially important, as it provides care to the elderly and gives students the chance to learn from their elders. It's all about giving back and leading by example.



### More than an education.

We want to do more than help a student find a good job and live a comfortable life. Those are important goals, but it solves little on a community or societal level. We want to create leaders who will be committed and passionate about their communities, who will go out and contribute to creating a better, fairer Cambodia.

Srey Mom (left) is an example of the this idea in action. A former CCF student, Mom was invited to speak at the BBC 100 Women event in London, for her leadership skills and commitment to her community.



# 2013 Highlights



## Child Protection Unit

The worst crimes committed against children in Cambodia are investigated by the Cambodian Children's Fund's newly-formed Child Protection Unit.

The CPU launched as a joint initiative with Cambodian National Police to bring child abusers to justice and protect young victims who cannot protect themselves. Cambodia suffers from an appallingly high rate of sexual abuse coupled with a low arrest rate. Since the CPU's formation in July 2013, dramatic progress has been made in building national capacity to bring an end to these crimes.

The CPU is a unique undertaking that partners experienced Western police investigators with the Cambodian National Police. The CPU have seconded national police to work within the Unit. The police are not restricted by provincial borders and have received first-rate training in investigating abuse.

In its first several months of operation (July to December 2013), the CPU received 54 cases including seven homicides and three attempted murders. The majority of the cases were rapes of children as young as two years old. For the year, 46 arrests were made for an impressive 84 percent arrest rate.

### The Investigations

When a case of child rape, murder or other abuse

happens, local police departments bring in the CPU. Many of the cases occur in rural villages where local police are under equipped. The CPU's investigations are rigorous and evidence gathering is thorough. The team of Cambodian National Police and Western investigators utilize the latest techniques in order to build strong cases that ensure abusers are brought to justice.

One example of this is the introduction of luminol, which is now being used by police in Cambodia for the first time. Luminol illuminates blood stains - no matter how bleached or scrubbed - under black light. This tool, which is taken for granted in developed countries, has proved invaluable in solving cases and changed the way investigations are conducted throughout the country

### Helping Victims

The sad truth is that perpetrators of sexual abuse are often male family members. Since men are typically the sole income earners, crimes go unreported because families have no other means of income. The CPU ensures that victims and their families are given financial, nutritional and legal support in order to end the cycle of abuse.

Another reason crimes go unreported is because of the traumatic reporting process for children. Victims are interviewed multiple times throughout the legal process, sometimes with the abuser in the same room. To lessen this trauma, the CPU is using video interviews to prevent repeat in-person interviews. New child-friendly interview rooms ensure that the child is comfortable and the abuser is nowhere near.



# 2013 Highlights

To further help, the CPU renovated the Phnom Penh Referral Hospital to improve the quality of care that sexual abuse victims receive.

## Building Capacity

Police in Cambodia are often unable to thoroughly investigate difficult crimes due to a lack of training and resources. The CPU, in partnership with visiting experts from the U.K. and Australia, provides special training in crime scene investigations and other best practices. The tools needed for policing, such as digital cameras and fingerprint kits, are

provided to local police departments.

## Future Plans

Even in its early stage, the CPU has exceeded all expectations. Still, the solved cases are just a small percentage of the overall abuse in Cambodia and the problem remains widespread. The CPU is poised to make a lasting change with its focus on building national capacity and training police. These are just the first steps of a long term initiative with enormous potential.



## University Students and the CCF Promise

Every student in our education program has the promise of attending university. CCF removes the financial obstacles and provides the best possible education in order for each student to reach their maximum academic potential. Children who once toiled in the heat and filth of the Steung Meanchey garbage dump are now studying in university, an achievement beyond their dreams.

This approach to education has paid off. In 2013, all 30 students who took the national grade 12 exams passed and entered university. The total number of CCF students enrolled in universities is expected to top 100 in the 2014-15 school year, 170 in 2015-16 and 200 in 2016-17.

Even when a student is enrolled in university, CCF continues to support each student, helping them traverse the transition from high school to university and from youth to adulthood.

Preparation for university begins early. We provide career counseling and university guidance from grade 10 onwards. This support includes career testing, sessions with CCF's career counselor and presentations from career professionals and universities.

Students in grade 12 are given an early taste of on-the-job life through internships. These internships, at both CCF facilities and in the greater community, give students practical experience and help guide their future plans. Career guidance continues throughout the university years, and includes job search and placement assistance.



### Granny Program Launches

Grannies are the keepers of knowledge to what life in Cambodia used to be like, yet many elderly people struggle in dire poverty with few opportunities.

The granny program ensures that these women receive the care they need to live healthily and comfortably. It's our Junior Leadership students who make the house calls and bond with the grannies.

### Film Night Near the Old Dump

It was a special night in the community for 1,000 people who came out to watch a film near the old garbage dump. With a makeshift screen and rented projector, CCF showed a family film for everyone to enjoy.



### Home for the Holidays

Khmer New Year is the most important holiday of the year and we arranged for 1,500 students to return to their homelands with free transportation, rice and some spending money.

The logistics of such a trip requires lots of effort on behalf of our staff, but it underlines CCF's goal of ensuring that family bonds are kept strong.

### 300 More Students Receive an Education

CCF partnered with a local public school to ensure 300 students not enrolled in CCF's programs can attend school and receive an education.

CCF already cares for more than 1,700 kids, but these students aren't a part of the organization. They live outside CCF's coverage area and were struggling to attend public school.



January

February

March

April

May

June



### Media: The Cultureist

"Through the Looking Glass: A Journey of Altruism in Phnom Penh"

A colorful profile on Scott and his day-to-day work at CCF.



### Media: Weekend Australian Magazine:

"10 Questions for Scott Neeson"

Ten questions with CCF founder and executive director Scott Neeson.

### Help From Hollywood

Director Roland Emmerich (Independence Day, 2012) generously hosted a gala fundraiser event in Los Angeles that raised nearly \$1 million for CCF's core programs thanks to Emmerich's matching donation.



### Media: West Weekend

"Riches to Rags"

A cover story on the successes of Cambodian Children's Fund.





### Child Protection Unit Opens

The Child Protection Unit, a joint initiative with CCF and the Cambodian National Police to bring child abusers to justice and protect those who cannot protect themselves, begins operations. In its first year, 173 cases were referred to the CPU. Eighty percent of those cases led to an arrest.



### Onward to University

All 30 students who took the grade 12 national exams passed and each of the students continued their studies at university. While most Cambodian schools don't have a graduation ceremony, we decided to organize one for the hard-working students entering university.

We're especially proud that six of the students from the class of 2013 received full scholarships to the schools of their choice. For the others, we provided tuition and support so that all have the freedom to study with peace of mind.



### Students Inspire at Leadership Summit

Every year, CCF sends some of its brightest students for the weeklong Global Youth Leadership Foundation organized by the Anthony Robbins Foundation.

It's an invaluable trip, as the students come back eager to pass on what they've learned.

### World Housing Gifts Homes to those in Need

Deserving families enrolled in CCF's programs receive brand-new homes thanks to a partnership with World Housing.

For every home sold abroad, World Housing provides CCF with the means to build a safe, life-changing home to a family that needs it most.

The World Housing and CCF partnership hopes to see as many as 30 homes provided to needy families each month.



### 600th Birth in Maternal Care Program

On Christmas Eve, the maternal care program reached another milestone. In an area once plagued with a high maternal death rate, little Rith was the 600th birth in the program without losing a mother: "leader of the week" by organizers and his peers.

## July

## August

## September

## October

## November

## December



### Annual Leadership Camp Sees Record Numbers

Every year, hundreds of students look forward to spending three days in the countryside at our leadership camp. 2013 was no exception, with students enjoying games, swimming, hiking and other activities. We have staff on site, but it's our leadership students who oversee the camp.



### Former Student Invited to BBC's 100 Women Conference

Before Srey Mom came to CCF, she was toiling in a garbage dump to help her family. After receiving an education through CCF, the 20 year old is now inspiring dozens of women in our leadership department.

The BBC invited Srey Mom to the U.K. to speak at their 100 Women conference. The special event highlights brought 100 women from all over the world together for an "ambitious day of debate and discussion." Srey Mom's panel discussion was broadcast live by the BBC World Service.



### Legendary Skater and Child Sponsor Tony Hawk Visits CCF

During a tour through Cambodia, skateboarding legend Tony Hawk, came to CCF to meet Srey Nich, who he has been sponsoring for years. He even took her skateboarding.



### Media: Sydney Morning Herald/The Age

"On the Road to Salvation"

An in-depth look at the Child Protection Unit and its mission to protect child abuse victims in Cambodia.

# Statement of Financial Position

## CAMBODIAN CHILDREN'S FUND

### STATEMENT OF FINANCIAL POSITION

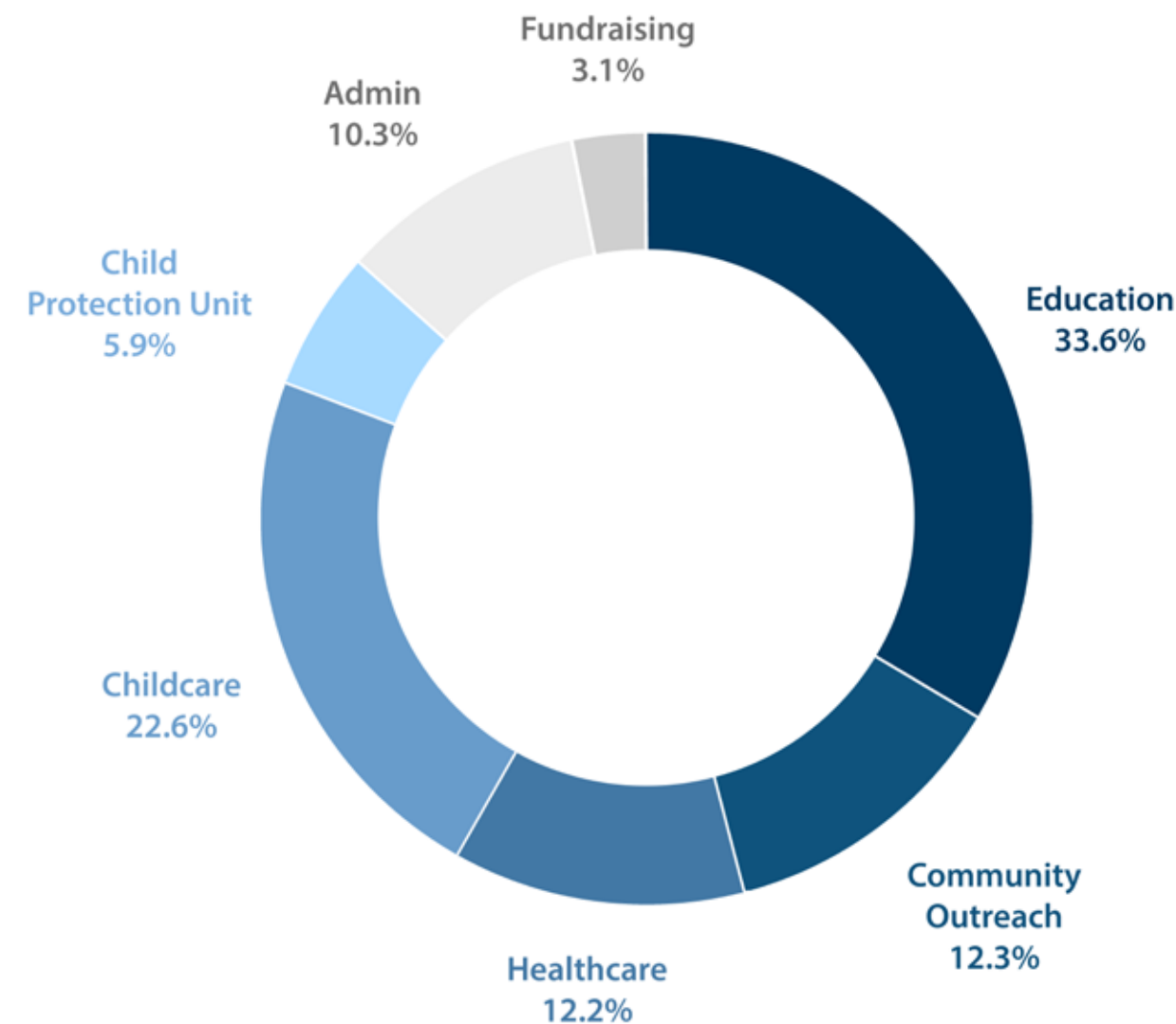
DECEMBER 31, 2013

(WITH SUMMARIZED COMPARATIVE TOTALS AS OF DECEMBER 31, 2012)

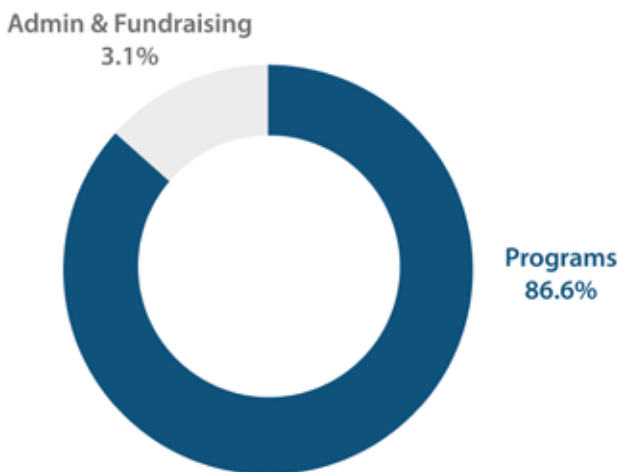
	December 31	
	2013	2012
<b>ASSETS</b>		
<b>CURRENT ASSETS</b>		
Cash and cash equivalents (Notes B, C and E)	\$ 2,967,235	\$ 2,954,072
Accounts receivable	3,169	19,320
Loans receivable	47,792	63,916
Prepaid expenses	49,774	58,005
Inventory of rice stock	5,532	3,220
<b>TOTAL CURRENT ASSETS</b>	<b>3,073,502</b>	<b>3,098,533</b>
Investments (Note C)	3,500,000	500,000
Fixed assets, net of accumulated depreciation (Note D)	2,158,089	729,408
Other assets	233,719	128,295
<b>TOTAL ASSETS</b>	<b>\$ 8,965,310</b>	<b>\$ 4,456,236</b>
<b>LIABILITIES AND NET ASSETS</b>		
<b>LIABILITIES</b>		
<b>CURRENT LIABILITIES</b>		
Accounts payable and accrued expenses	\$ 141,472	\$ 97,670
<b>TOTAL CURRENT LIABILITIES</b>	<b>141,472</b>	<b>97,670</b>
<b>TOTAL LIABILITIES</b>	<b>141,472</b>	<b>97,670</b>
Commitments and contingency (Notes F & G)		
<b>NET ASSETS</b>		
Unrestricted	8,703,838	4,358,566
Temporarily restricted (Note H)	120,000	-
<b>TOTAL NET ASSETS</b>	<b>8,823,838</b>	<b>4,358,566</b>
<b>TOTAL LIABILITIES AND NET ASSETS</b>	<b>\$ 8,965,310</b>	<b>\$ 4,456,236</b>



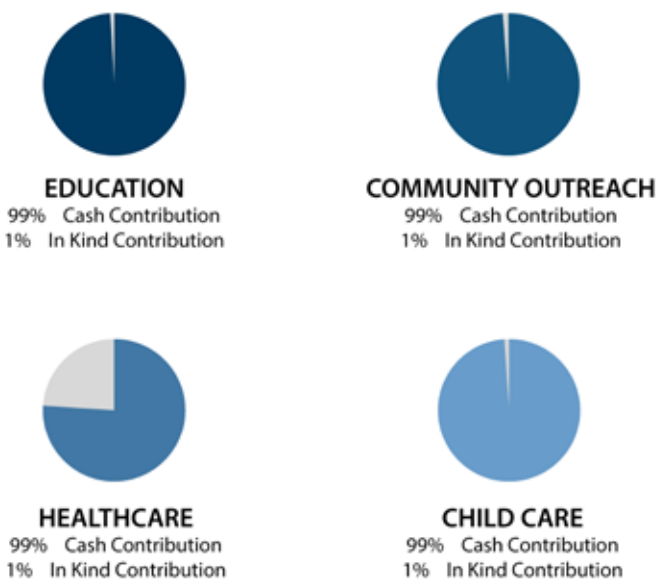
# Expenditure by Purpose



## Program Spending



## In Kind Contributions



# Statement of Activities

## CAMBODIAN CHILDREN'S FUND

### STATEMENT OF ACTIVITIES

YEAR ENDED DECEMBER 31, 2013

(WITH SUMMARIZED COMPARATIVE TOTALS FOR THE YEAR ENDED DECEMBER 31, 2012)

			Total	
			Year Ended December 31	
	Unrestricted	Temporarily Restricted	2013	2012
<b>REVENUE AND SUPPORT</b>				
Contributions	\$ 10,019,214	\$ 120,000	\$ 10,139,214	\$ 4,905,618
Program revenue	133,385		133,385	162,859
In-Kind supplies	286,893		286,893	277,343
Investment income	37,582		37,582	16,536
Other income	3,545		3,545	-
Realized gains <losses>	-		-	4,199
	<u>10,480,619</u>	<u>120,000</u>	<u>10,600,619</u>	<u>5,366,555</u>
<b>TOTAL REVENUE AND SUPPORT</b>	<u>10,480,619</u>	<u>120,000</u>	<u>10,600,619</u>	<u>5,366,555</u>
<b>EXPENSES</b>				
Program services	5,318,094		5,318,094	3,441,732
General and administrative	633,349		633,349	592,884
Fundraising	183,904		183,904	386,955
<b>TOTAL EXPENSES</b>	<u>6,135,347</u>	<u>-</u>	<u>6,135,347</u>	<u>4,421,571</u>
<b>CHANGE IN NET ASSETS</b>	<u>4,345,272</u>	<u>120,000</u>	<u>4,465,272</u>	<u>944,984</u>
<b>NET ASSETS, beginning of year</b>	<u>4,358,566</u>	<u>-</u>	<u>4,358,566</u>	<u>3,413,582</u>
<b>NET ASSETS, end of year</b>	<u>\$ 8,703,838</u>	<u>\$ 120,000</u>	<u>\$ 8,823,838</u>	<u>\$ 4,358,566</u>





# **ANGKOR WAT**

## **\$100,000 +**

Blackburne Property Group

David & Caroline Ryan

Goldman Sachs Gives

John and Cammie Rice

Roland Emmerich

Steven Tisch Family Foundation

Sumner M. Redstone Charitable Foundation

The Cripps Foundation

Tim Leissner



# BAYON

## \$10,000 to \$99,999

Adam and Charlotte  
O'Connor

Adam Press

Aidan O'Meara

Angus Faed

Ann Tarleton

Anne R. Dow Family  
Foundation

Anouk Hengeveld

Ben Gilks

Ben Meek

Billy Casey

BNY Mellon Community  
Partnership

Bradley Fischer

Bradley Ross

Bryant & Linda Edwards  
CAA

Charles Shewmake

Christopher Cole

Clifford Ross

Credit Suisse

Darren Fisk

David & Linda Purcell

David and Sarah Harden

David and Wendy Thomas

Diana Bowen

Direct Relief International

Erwin Stoff

Fidelity Charitable Gift Fund

Frederick Towfigh

Gavekal Endowment

General Electric Company

Geoff Culbert

Geoffrey Brewer

Greg and Tracey Stocks

Hao Cheng Liu

Harald Kloser

Hong Kong Broadband  
Network Limited

Hopper-Dean Foundation

J. Michael Evans

James and Jenny Austin

James Houghton

Jeffrey Boutilier

Jeremy Hobbins

Jerome Murray

Jodi Monro and Jeff

Emanuel

John Diemer

John McGuire

Jonathan and Bini Larsen

Julie Harkins

Kevin G. Schoeler

Foundation

Lee Guan Kelvin Koh

LifeHealthCare

Lucy and Toby Watson

Marc Fisher

Mark Gordon

Mikaela Martinez

Muffy & Andy DiSabatino

Murray, John and Kate  
Wilson

Nature's Organics

Neil Gunningham





# BAYON

**\$10,000 to \$99,999**

News Corp. Foundation

Oliver Bolitho

Patrick Kerrigan and Libby

Vaughan

Paul Feinstein

Paul Saunders

Pauline Timms

Rebecca Gaples

Renaud Samyn

Rising Sun Pictures

Ronald Lee

Ros and Peter Stirling

Roseann Stewart

Rotary District D9810

Sheel Kohli

Sony Pictures

Entertainment, Inc.

Southern Cross Computer  
Services

Stephen and Jane Bird

Susan Pasley

Tanya Maree Kramer

The Coca-Cola Company

The Laffey McHugh

Foundation

Thomas & Jessica Rothman

TM Productions

Tom & Audrey Morrow

Tom Sayer

TOMS

Trustees of the Pascal

Weinraub 2003 Trust

VF Corporation

Warren Share







